

Sponsors as of Sept. 20, 2006

Host Sponsors



Major Sponsors



High Level Sponsors



Contributing Sponsors



Media Sponsors



Producers



Partners & Supporters



Contacts

Contact in Europe:

Sponsorship & General Information
 Florian Schoenhammer
 +49 89 513 99 803
 fcschoenhammer@ebdgroup.com

Exhibition
 Petra Fischer
 +49 345 522 6222
 pfischer@ebdgroup.com

Contact in the US & Canada:

General Information
 Tom Voigt
 +1 760 930 0500
 tvoigt@ebdgroup.com

BIO contact
 Katrin Heidon
 +1 212 332 4354
 kheidon@bio.org

ERD Group Inc.
 2032 Centre del Nogal, Suite 120
 Carlsbad, CA 92011, USA
 +1 (760) 930 0500

BUILDING VALUE THROUGH PARTNERSHIPS
 A forum to promote business among the pharmaceutical, biotechnology and financial industries

BIO-EUROPE

12TH ANNUAL INTERNATIONAL PARTNERING CONFERENCE

NOVEMBER 6-8, 2006

CONGRESS CENTER

DUESSELDORF, GERMANY

NOVEMBER 6-8, 2006
CONGRESS CENTER SUED -
STADTHALLE
DUESSELDORF, GERMANY

An Overview of Results from Last Year's BIO-Europe:

- 5,124 scheduled one-on-one partnering meetings
- 1,450+ delegates from over 850 companies
- Nearly 200 company presentations
- Delegates from 34 countries
- 60 international exhibitors

www.ebdgroup.com/bioeurope

www.bio.org/events



Welcome to BIO-Europe 2006!

Conducting business meetings at Partnering Conferences has become an intrinsic part of the business development activities of biotech and pharma executives. The Biggest Partnering Event in Europe is BIO's and EBD Group's annual BIO-Europe Conference. The organizers have developed state-of-the-art partnering software that enables participants to select the most suitable potential partners. The system – industry-specific, Web-based and interactive – is uniquely suited for the needs of biotech and pharma companies.

Panel, workshops, company presentations and exhibits will provide you with the latest information about the industry. A high level faculty of renowned industry experts and thought leaders will discuss the latest trends and provide you with hands-on information in various workshops and panels. CEOs of the most prominent European, Asian and North American biotech companies will present their investment and strategic alliance opportunities. And last but not least the exhibition provides you with further opportunities to network and learn about collaboration opportunities and services available. Don't miss out on BIO-Europe's excellent networking opportunities and join us in Duesseldorf!

Why attend BIO-Europe 2006

- Network with key decision makers
- Meet one-on-one with investors, pharma & biotechs
- Present/showcase your company before an international audience
- Discover the latest industry trends in workshops and panel discussions

BIO-Europe features



Presentations

Attend presentations of leading pharma & biotech companies



Partnering

Benefit from pre-scheduled one-on-one partnering meetings with pharma, investors and biotech companies



Sessions

Tune into the latest industry trends



Exhibition

Visit high profile exhibits which showcase products, services and technologies

Quotes & Comments

"BIO-Europe is a very good partnering medium, one that can't be missed." **Elan Corporation**

"Well prepared and professional meeting with an excellent forum for networking and getting an update on the biotechnology industry." **Parxel International Technology Center**

"Very well organized event. It really helped to establish new business contacts." **ISTC (International Science and Technology Center)**

"This year's BIO-Europe in Duesseldorf featured an excellent mix of European and North American companies and was of impeccable organisation. The partnering conference is an outstanding platform to make new contacts and to network in the industry." **Boehringer Ingelheim GmbH**

"It is one of the most important shows for the biotech industry in Europe." **DSM Biologics**

Partnering

BIO-Europe 2006 offers a unique benefit to its participants: We arrange private one-on-one meetings for all companies prior to the conference. All participating companies may request meetings with up to 50 companies of their choice.

Partnering allows participants to meet potential co-operation partners, customers, and suppliers – cost-effectively in one venue. Last year, 5,124 meetings were scheduled.

The Partnering process is facilitated by an easy-to-use, web-based software system that enables attendees to select companies by specific clinical phase, indication, opportunity type and many other categories.

Company Presentations

Leading public and emerging private biotech companies as well as mid-size and large pharma present their company backgrounds and partnering goals in 15-minute presentations. Biotech companies will be grouped into different tracks based on their indications.

Workshops & Expert Panels

BIO-Europe continues to attract high level faculty to panels and workshops. They include renowned industry experts who provide updated analysis as well as seasoned professionals who share their experience with the audience.

Topics chosen reflect the most important issues affecting the life science industry today.

Sponsoring

Sponsorship opportunities are available for companies seeking maximum exposure to BIO-Europe participants. For details on sponsorship packages please contact:

Florian Schoenhammer at
f.schoenhammer@ebdgroup.com
or +49 89 513 99 803

Exhibits

The Exhibition is open during the entire meeting and is located in the center of the conference. This is where the internet café and partnering terminal are located and all meals and coffee breaks will be served. High visibility is guaranteed!

Space is sold on a first-come, first-served basis.

For more information contact
Petra Fischer at
pfischer@ebdgroup.com
or +49 345 522 6222

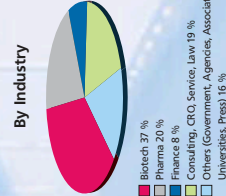
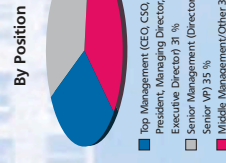
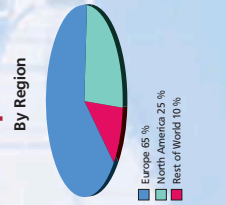
Conference Accommodation

BIO-Europe offers a number of first class conference hotels. For more information and hotel rates please see our hotel & travel page at www.ebdgroup.com/bioeurope/accommodations.htm.

Registration Fees

Registration Fee
1,795 EUR or 1995 USD
Onsite Registration Fee
1,895 EUR (credit card only)
USD fees apply to North American companies only.

Participants Breakdown



www.ebdgroup.com/bioeurope

INTERNATIONAL SEMINARS

13:30–14:30 Russia
14:40–15:40 Italy
15:50–16:50 Korea
17:00–18:30 Japan
19:00 Reception & Dinner
sponsored by 

Sunday, November 5

18:30 **BIO-Europe 2006 – Registration opens (Rheinterrasse Duesseldorf)**
19:30 Welcome Reception (Rheinterrasse Duesseldorf)
sponsored by 

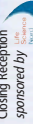
Monday, November 6

7:30 Registration & Exhibition opens
9:00–10:30 **INTERACTIVE WORKSHOPS**
– IPO vs. M&A: How to be Prepared for Both
– Stem Cells – Where's the Next IPO Coming From?
– R&D and In-licensing in the Asia Pacific Region: How BioPharma is Gearing Up to Become a Global Player
– The Convergence of Biotechnology and MedTech in a Global Market
– Save Money and Time While Spicing up Your CTAs (INDs: Phase 0.5 and Adaptive Designs)
– Strategic Partnerships: Selecting the Right Partner to Speed and Ease the Road to Commercialization

10:45–11:15 Welcome & Opening Remarks
11:15–12:30 **Opening Plenary Session**
Partnerships vs. M&A
12:30–13:30 Lunch

13:30–15:00 **PHARMA TRACK**
13:30–15:00 Dealmaking Review and Forecast
15:15–18:30 Pharma Presentations
13:30–15:00 **BUSINESS DEVELOPMENT TRACK**
Corporate Capital – The Best Source of Smart Money?
A Day in the Life of Experienced Dealmakers - Part IV
An Expert's View on the State of the Industry

Wednesday, November 8

7:30 Registration & Exhibition
8:00–13:00 Partnering One-on-One Meetings
8:30–13:00 Biotech Company Presentations
13:00–14:00 Lunch
14:00–17:00 Partnering One-on-One Meetings
17:00 Closing Reception
sponsored by 

15:15–16:45 **IN THE SPOTLIGHT**
17:00–18:30 Dealmakers - Part IV
13:30–15:00 **PharmacoGenomics: A Really Check What is so Hot about Specialty Pharma?**
15:15–16:45 **The Future is Now: Why you should be Excited about the Interface with White Biotech**
17:00–18:30

Important:
Registration opens at 18:30 on Sunday prior to the Opening Reception (Rheinterrasse Duesseldorf)

Additional Programs preceding BIO-Europe 2006:
BIO Advanced Business Development Course
November 3–5, 2006
Hilton Hotel Duesseldorf
For more information please visit
<http://www.ebdgroup.com>