



INSTITUTE OF
BIOMEDICAL
RESEARCH
& TECHNOLOGY



Dept. of
ORTHOPAEDICS
and Lab. of
CYTOGENETICS
& MOLECULAR
GENETICS



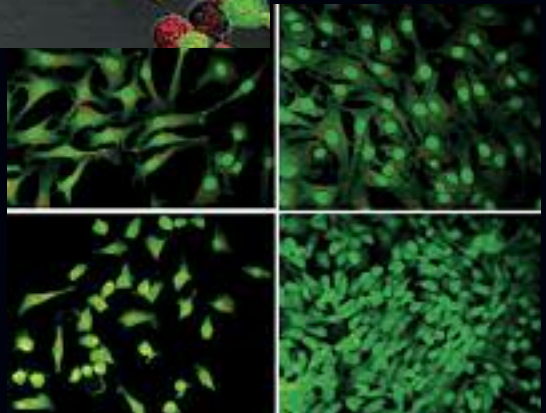
Faculty of
MEDICINE
University of
THESSALIA

Cartilage Biology

INTERNATIONAL SYMPOSIUM

June 18-20, 2009
Larissa, Greece

“Hippocrates” Auditorium
School of Medicine
University Campus



FINAL PROGRAM

ΑΡΩΓΗ

ΘΕΣΣΑΛΙΚΟ ΚΕΝΤΡΟ ΑΠΟΚΑΤΑΣΤΑΣΗΣ



προτεραιότητά μας
η υγεία σας!

ΝΙΚΑΙΑ ΛΑΡΙΣΑΣ - Τ.Κ. 415 00, ΤΗΛ.: 2410 922.110, FAX: 2410 922.109

www.apokatastasi.gr

Welcome Message	3
General Information	5
Registration	9
Exhibition Floor Plan.....	10
Exhibitors Booth No.	10
Acknowledgment of Sponsors.....	11
Scientific Program	12
Faculty.....	18

SYMPOSIUM ORGANIZER

INSTITUTE OF
 BIOMEDICAL RESEARCH
 & TECHNOLOGY/CERETETH
 51, Papanastasiou Street
 412 22, Larissa, Greece
 Tel.: +30 2410 258880
 Fax: +30 2410 258889
 biomed.larissa@cereteth.gr
 www.biomed.cereteth.gr

SYMPOSIUM SECRETARIAT

C.T.M. International S.A.
 5, Apollonos Street
 105 57, Athens, Greece
 Tel.: +30 210 32 44 932
 Fax: +30 210 32 50 660
 biology2009@ctmi.gr
 www.ctmi.gr/biology2009

ISOTIS

Accelerating Innovation in Orthobiologics™

Accell

How do you Accell?

Accell TBM™

(Total Bone Matrix), Pre-formed Osteoinductive, Concentrated Natural Human BMPs



Accell Putty™

Concentrated Natural Human BMPs



Accell Plus™

Concentrated Natural Human BMPs with Enhanced Handling



DIZG

German Institute for Cell and Tissue Replacement

CANCELLOUS CHIPS

FEMORAL HEADS



CANG. CUBES & BLOCKS

BONE-TENDON-BONE



EPIFLEX



Advancing the
World of Tissue
Transplantation



ΑΠΟΡΩΣΙΣ Α.Ε.

Θησέπειος 68, 144 57 Μεσογειακή Ακρόαση
Τηλ.: 210-2841000, Fax: 210-2820945
URL: www.aporosis.gr, e-mail: kilio@aporosis.gr

WELCOME MESSAGE

With great pleasure the Organizing Committee invites you to attend the International Symposium “Cartilage Biology” organized by BIOMED in collaboration with the Department of Orthopaedics and Laboratory of Cytogenetics and Molecular Genetics of University of Thessalia, which is to be held in the city of Larissa from June 18-20, 2009.

BIOMED has been founded in 2006 by the Ministry of Development. It has emerged as the outcome of the scientific collaboration with the Faculty of Medicine and covers the area between medical applications and the rapidly developing basic biomedical research. Its research activities focus on the areas of genomics, proteomics, physiology, biochemistry, neuroscience, tissue engineering and biomedical imaging.

The present event is an opportunity to bring together scientists from Universities and Research Institutes of Europe and the US, in order to present the current state-of-the-art in cartilage biology in health and disease. Distinguished scientists will elucidate on the current knowledge based on the convergence of medicine and biology, aiming at better understanding the biological processes governing cartilage homeostasis at cellular and molecular level.

Larissa, is the place where Hippocrates lived his last years, taught, treated patients and died and is located in central Greece, offering many opportunities for exciting journeys to Olympus mountain, to the Meteora and to the nearby seashores where one could cherish the magnificent scenery of the Aegean Sea from their forest parks.

We are looking forward to welcoming and hosting you in Larissa.

K.N. Malizos

Prof. Orthopaedics
Director of Biomed

A. Tsezou

Assoc. Professor
Medical Genetics

Coordinators

K.N. Malizos
A.Tsezou

Organizing Committee

Th. Karachalios
T. Moraitis
Z. Dailiana
S. Varytimidis
M. Hantes
K. Bargiotas
G. Basdekis



Advancing Quality of Life.

Biomet.



VANGUARD



OXFORD UNI



EXCEED



MAGNUM



GPS III



POLARIS 5.5

BIOMET[®]

Biomet Ελλάς Α.Ε.

Καρδιτσίου 54 Μοσχάτο, Αθήνα 183 44

Τηλ: 210 9200600, Fax: 210 9215204

e-mail: biomethellas@biometeurope.com

Υπακ/μα Θεσσαλονίκης

Καρδιτσας 8, 542 49 Θεσσαλονίκη

Τηλ: 2310 304477, Fax: 2310 306275

www.biomet.gr

GENERAL INFORMATION

Banks

Banks are open from 08.00am to 02.00pm excluding weekends. ATM facilities are available.

Certificate of Attendance

A certificate of attendance will be provided in your registration material.

Climate

The average temperature in June ranges from 25°C to 30°C.

Congress Badges

For security purposes, delegates, speakers, accompanying guests and exhibitors are asked to wear their name badges to the scientific sessions and social functions. Entrance into sessions is restricted to registered delegates only. Entrance to the exhibition will be limited to badge holders only. If you misplace our name badge, please refer to the Registration Desk to organise a replacement.

Congress Venue

“Hippocrates” Auditorium, School of Medicine, University of Thessalia. The Medical School is situated next to the University Hospital of Larissa (Mesourlo).

CME Credits

The symposium will be accredited by the European Accreditation Council for Continuing Medical Education.

Credit Cards - Currency Exchange

Most major cards (AmEx, Diners Club, MasterCard and Visa) are accepted at hotels, department stores and most of the restaurants. The Greek currency unit is Euro. Please note that identification (passport) is requested when exchanging money. All banks in Greece are authorised to convert foreign currency to Euro.

Disclaimer

The Organizing Committee and CTM International SA accept no liability for injuries or losses of whatever nature incurred by participants and/or accompanying persons, or for loss, theft or damage of luggage and/or personal belongings.

Electricity

The electrical supply in Greece is 220 Volts, AC 50Hz.



stryker[®]

Joint Replacements

Trauma

Spine

Micro Implants

Orthobiologics

Instruments

Interventional Pain

Navigation

Endoscopy

Communications

Patient Handling
Equipment

EMS Equipment

STRYKER ΕΛΛΑΣ Ε.Π.Ε.

Έδρα: Α. Μεσογείων 455
153 42 Αγ. Παρόικιας, Αθήνα
Τηλ 2 10 9003222 Φαξ 2 10 9004812
Υποκα: Δργ. Τσίπου 20
04464 Βοσπολίτικα,
Τηλ. 23 19 9 12500 Φαξ 23 10 912022
www.stryker.gr

GENERAL INFORMATION



Larissa

Larissa is the capital of the Thessalia, located in the midlands of Greece, 3 hours north-ern of Athens by car and a major hub for ground transportation. It is an agricultural, commercial and industrial centre in the middle of a large plain. In less than an hour of car-drive a visitor can reach at the costal line of the Aegean Sea. It is located at a small distance from Mount Olympus (of the ancient Greek Gods) and the breathtaking Me-teora Cliffs, which compose a spectacular scenery. It has also very easy access to the picturesque villages of Mount Pelion and the National Park at Tempi Valley (between Mt Olympus and Mt Kissavos). Larissa has a history going back to the Paleolithic pe-riod, findings from excavations are displayed at each archeological museum. Larissa is the homeland of the founder of western medicine, Hippocrates, who spent the last years of his life treating patients until his death.

Language

All slide presentations will be in English. English is the official language of the Symposium.

Mobile Telephones

Delegates are asked to switch off their mobile phones when in sessions.

Passport and Visas

Citizens with EU nationality can travel with any form of ID and may remain indefinitely. Visitors from all other countries should check with the Greek embassy or consulate in their country of residence as document requirements may vary. Delegates requiring a letter of invitation for visa purposes should write to the congress organizers.

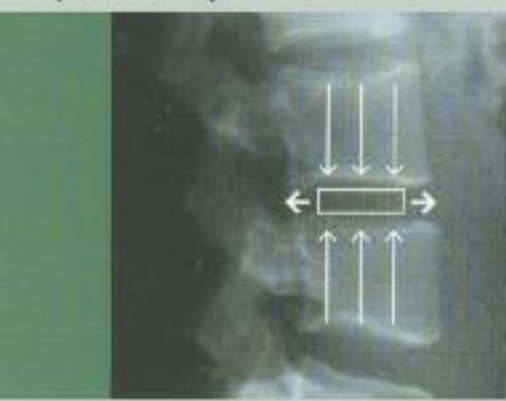
NON Smoking Policy

Smoking will be strictly enforced and is not permitted in session rooms or the Exhibition Area.



co.don[®]
we grow the best cells

chondrotransplant[®] DISC
autologous disc-derived
chondrocyte transplant
(ADCT)



ΑΡΘΡΩΣΙΣ Α.Ε.
Πέτριδος 44, 144 52 Μεταμόρφωση Αττικής
Τηλ: 210 2841006, Fax: 210 2826045
URL: www.arthritis.gr, e-mail: info@arthritis.gr

GENERAL INFORMATION

Scientific Topics

- ❑ **CARTILAGE IN HEALTH AND DISEASE**
- ❑ **EPIDEMIOLOGY OF OSTEOARTHRITIS**
- ❑ **GENETICS OF CARTILAGE DEGENERATION**
- ❑ **IMAGING**
- ❑ **TISSUE ENGINEERING**
- ❑ **CURRENT THERAPEUTIC APPROACHES**
- ❑ **FUTURE PERSPECTIVES**

Transportation

The city of Larissa is 355 km away from Athens and 155 km from Thessaloniki. Private or public transportation is available. Some of the largest and most beautiful towns of northern Greece, such as Volos and Trikala less than 1 hour drive from the hotel while the Greek railway network passes through many landscapes of rare beauty.

From Athens: The International Airport of Athens “Eleftherios Venizelos” is located approximately 350 km from the hotel but if you choose to travel from the Airport with the Intercity train you will reach Larissa in less than four hours.

From Thessaloniki: The Airport “Makedonia” to Larissa is about one hour journey although both bus and train are required to reach your destination. Please do not hesitate to contact the symposium secretariat for any further information.

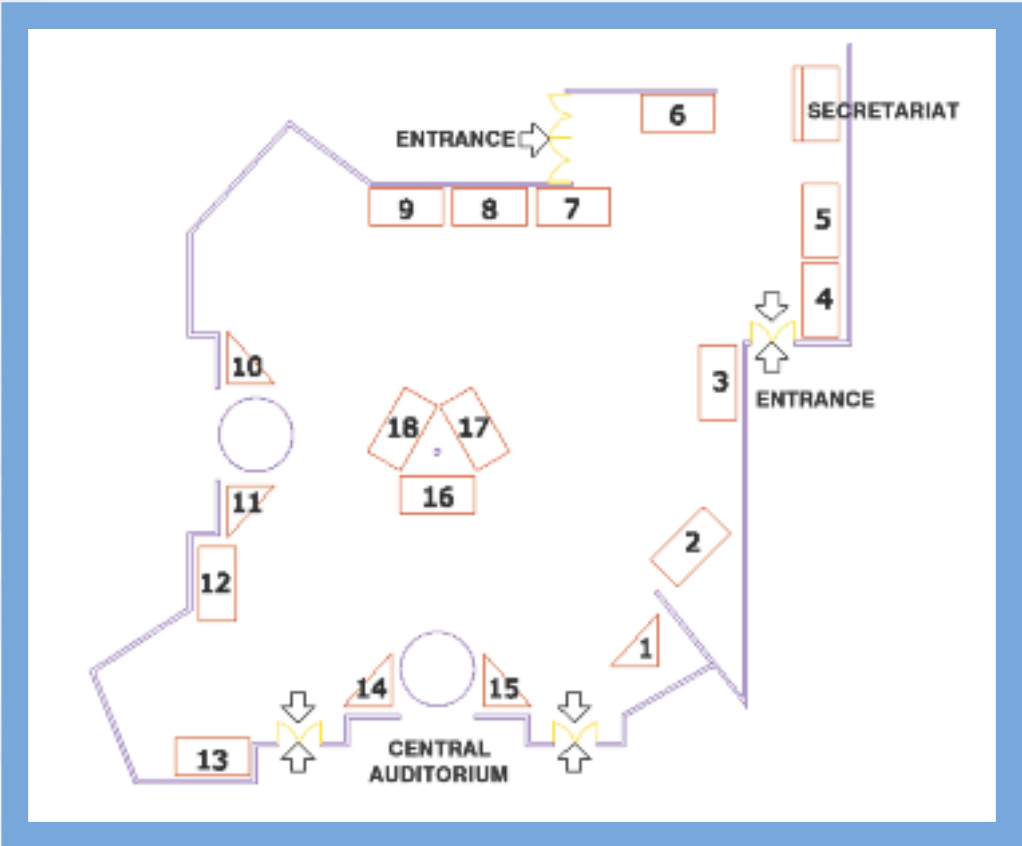
Registration

REGISTRATION TYPE	PRE REGISTRATION (until 15/5/09)	LATE REGISTRATION (16/5 to 20/6/09)
Participants	€ 150	€ 200
PhD & Post graduate students	€ 70	€ 100

Registration Fees Include

- Admission to symposium sessions
- Entrance to exhibition
- Symposium material
- Coffee and light lunch as in program

EXHIBITION FLOOR PLAN



COMPANY NAME	BOOTH NUMBER
AROGI	2
BIOMET HELLAS	3
STRYKER HELLAS	7
ELPEN	8
JOHNSON & JOHNSON HELLAS - DEPUY	9
HLAMIDIS ORTHOPEDICS	12
PHARMATHEN HELLAS	15
BIOSOLUTIONS	16
ARTHROSIS	17

ACKNOWLEDGMENT OF SPONSORS

The Organizing Committee would like to thank the following Sponsors for their valued support.

AROGI

ARTHROSIS

BIOMET HELLAS

BIOSOLUTIONS

BOEHRINGER INGELHEIM HELLAS

ELPEN

HLAMIDIS ORTHOPEDICS

JOHNSON & JOHNSON HELLAS - DEPUY

NOVARTIS HELLAS

PHARMATHEN HELLAS

SANOFI AVENTIS

STRYKER HELLAS

THURSDAY, JUNE 18, 2009

16.00 – 17.00 REGISTRATION

17.00 – 17.20 WELCOME

17.20 – 19.20 CARTILAGE IN HEALTH AND DISEASE

Moderators: A. Christodoulou, N. Papaioannou

17.20 – 17.35 **Effects of mechanical forces on articular cartilage**
K. Athanasiou

17.35 – 17.50 **Mechanical factors contributing to arthritides**
P. Megas

17.50 – 18.05 **Arthritis in the "unstable knee"**
K.N. Malizos

18.05 – 18.20 **Spine Arthritis**
P. Katonis

18.20 – 18.35 **Subchondral bone and cartilage biology**
Th. Karachalios

18.35 – 18.50 **Is osteoarthritis a reversible disease?**
G. Lyritis

18.50 – 19.05 **Osteoarthritis: Burden of the disease**
K.N. Malizos

19.05 – 19.20 **DISCUSSION**

19.20 OPENING CEREMONY

Welcome Address from Local Authorities

Keynote Speaker

The explanatory power of Darwinism 150 year after its birth
E. Zouros

Welcome Reception

FRIDAY, JUNE 19, 2009**08.30 – 09.45 OSTEOARTHRITIS: GENETICS (I)****Moderators:** M. Tzeti, A. Tsezou

- 08.30 – 08.45 **Importance of registries in multifactorial diseases**
C. Chatzichristodoulou
- 08.45 – 09.00 **Genetics of osteoarthritis**
I. Meulenbelt
- 09.00 – 09.15 **Difficulties in epidemiological investigation of osteoarthritis**
A. Gonzalez
- 09.15 – 09.30 **Large-scale evidence on genetics of osteoarthritis**
E. Evangelou
- 09.30 – 09.45 **DISCUSSION**

09.45 – 11.00 IMAGING OF THE CARTILAGE**Moderators:** I. Fezoulidis, E. Kapsalaki

- 09.45 – 10.00 **Ultrasound imaging in osteoarthritis**
M. Vlychou
- 10.00 – 10.15 **Chondral and osteochondral injuries**
A. Karantanas
- 10.15 – 10.30 **Advanced imaging**
S. Trattnig
- 10.30 – 10.45 **Postoperative imaging evaluation**
Ch. Glaser
- 10.45 – 11.00 **DISCUSSION**

11.00 – 11.30 BREAK

FRIDAY, JUNE 19, 2009

11.30 – 12.45 OSTEOARTHRITIS: GENETICS (II)

Moderators: M. Papadakis, Z. Mamouris

11.30 – 11.45 **Biomarkers in osteoarthritis**

I. Meulenbelt

11.45 – 12.00 **Genetic investigation of matrix proteases involvement in osteoarthritis**

A. Gonzalez

12.00 – 12.15 **Involvement of lipid metabolism genes in osteoarthritis**

A. Tsezou

12.15 – 12.30 **MicroRNAome of Osteoarthritic Cartilage**

D. Iliopoulos

12.30 – 12.45 **Genetics study of skeletal dysplasias focusing on the relation with common diseases**

S. Ikegawa

12.45 – 13.00 **DISCUSSION**

13.00 – 13.45 LUNCH

13.45 – 15.15 CURRENT THERAPIES IN CARTILAGE DEFECTS

Moderators: E. Antonogiannakis, S. Varitimidis

13.45 – 14.00 **Current concepts in the management of cartilage defects with autologous chondrocyte implantation**

A. Beris

14.00 – 14.15 **Microfractures**

M. Hantes

14.15 – 14.30 **Mosaic-plasty**

P. Nikolaou

14.30 – 14.45 **Clinical results and further indications of autologous 3- T dimensional chondrocyte transplantation**

R. Schnettler

FRIDAY, JUNE 19, 2009

14.45 – 15.00 **Autologous 3-dimensional chondrocyte transplantation –
Second look arthroscopy and histology results**
T. Schreyer

15.00 – 15.15 **DISCUSSION**

15.15 – 15.30 BREAK

15.30 – 16.15 AUTOIMMUNE DISEASES
Moderators: Ch. Moutsopoulos, G. Dalekos

15.30 – 15.45 **Cartilage lesion in autoimmune and inflammatory arthritis**
A.E. Tzioufas

15.45 – 16.00 **Intracellular matrix over production in scleroderma**
P.G. Vlachoyiannopoulos

16.00 – 16.15 **DISCUSSION**

SATURDAY, JUNE 20, 2009

08.30 – 09.45 CHONDROCYTE PROLIFERATION

Moderators: G. Kapetanos, G. Koukoulis

08.30 – 08.45 **Cellular senescence and homeostasis in the cartilage and the intervertebral disc**

D. Kletsas

08.45 – 09.00 **Cultivation and manufacturing of autologous cells under sterile conditions (Integrated Isolator Technology-IIT)**

V. Siodla

09.00 – 09.15 **Regulation of cell proliferation in the intervertebral disc**

D. Kletsas

09.15 – 09.30 **Hypoxia in normal and neoplastic cartilage formation**

M. Ioannou

09.30 – 09.45 **DISCUSSION**

09.45 – 11.00 GENETIC ANALYSIS IN JOINT DISEASES – LARGE SCALE DATA EVALUATION

Moderators: M. Tzeti, Z. Mamouris

09.45 – 10.00 **The effects of obesity on osteoarthritis in mice: Biomechanical, inflammatory, and behavioral studies**

F. Guilak

10.00 – 10.15 **Combined approach for bone and joint diseases using mouse and human genetics**

S. Ikegawa

10.15 – 10.30 **Protein Networks in Osteoarthritis**

D. Iliopoulos

10.30 – 10.45 **Modeling cartilage degeneration**

L. Alexopoulos

10.45 – 11.00 **Computational tools for biomedical data evaluation**

M. Zervakis

11.00 – 11.15 **DISCUSSION**

SATURDAY, JUNE 20, 2009**11.15 – 11.30 BREAK****11.30 – 13.15 TISSUE ENGINEERING & CARTILAGE REPAIR APPROACHES****Moderators:** K. Liadaki, M. Zervakis11.30 – 11.45 **A novel bioreactor for tissue engineering**

Y.F. Missirlis

11.45 – 12.00 **Functional tissue engineering of cartilage for osteoarthritis**

F. Guilak

12.00 – 12.15 **Inflammation and cartilage repair**

C. Evans

12.15 – 12.30 **Stem cells in tissue engineering of articular cartilage**

K. Athanasiou

12.30 – 12.45 **Generation of 3-D Cartilage Constructs from Embryonic Stem Cells: A Model System for a Biological Systems Engineering Approach**

A. Mantalaris

12.45 – 13.00 **Gene therapy approaches to cartilage repair**

C. Evans

13.00 – 13.15 **DISCUSSION****13.15 – 13.30 CONCLUSIONS & ADJOURN OF THE SYMPOSIUM**

FACULTY

ALEXOPOULOS L., Lecturer, Department of Mechanical Engineering, National Technical University of Athens, Athens, Greece

ANTONOGIANNAKIS E., Orthopaedic Surgeon, Director of Arthroscopic Surgery Center, IASO General, Athens

ATHANASIOU K., Karl F. Hasselmann Professor, Department of Bioengineering, Rice University, Houston, United States

BERIS A., Professor, Orthopaedic Department, University of Ioannina, School of Medicine, Ioannina, Greece

CHATZICHRISTODOULOU C., Associate Professor, Department of Hygiene and Epidemiology, Faculty of Medicine, University of Thessalia, Larissa, Greece

CHRISTODOULOU A., Professor & Chairman, Orthopaedic Department, Medical School, Aristotle University of Thessaloniki, Thessaloniki, Greece

DALEKOS G., Professor & Chairman, Department of Internal Medicine, Faculty of Medicine, University of Thessalia, Larissa, Greece

EVANGELOU E., Assistant Professor, Division of Solid State Physics and Physics of Materials & Surfaces, Department of Physics, University of Ioannina, Ioannina, Greece

EVANS C.H., Robert W. Lovett Professor of Orthopedic Surgery, Harvard Medical School, Boston, United States

FEZOULIDIS I., Professor & Chairman, Department of Radiology, Faculty of Medicine, University of Thessalia, Larissa, Greece

GLASER C., Dr., Institute of Radiology, Ludwigs-Maximilians-University Munich, Germany

GONZALEZ A, MD, PhD, Laboratorio de Investigacion 2 and Rheumatology Unit, Hospital Clinico Universitario de Santiago, Santiago de Compostela, Spain

GUILAK F., Laszlo Ormandy Endowed Professor of Orthopaedic Surgery, Departments of Surgery, Biomedical Engineering, and Mechanical Engineering & Materials Science, Duke University Medical Center, Durham, United States

HANTES M., Consultant Orthopaedic Surgeon, Orthopaedic Department, University of Thessalia, Larissa, Greece

IKEGAWA S., MD, PhD, Head of Laboratory for Bone and Joint Disease, Center for Genomic Medicine, RIKEN, Tokyo, Japan

ILIOPOULOS D., Department of Biological Chemistry and Molecular Pharmacology, Harvard Medical School, Boston, Massachusetts, United States

FACULTY

IOANNOU M., Lecturer, Department of Histopathology, Faculty of Medicine, University of Thessalia, Larissa, Greece

KAPETANOS G., Professor & Chairman, Orthopaedic Department, Aristotelion University of Thessaloniki, Thessaloniki, Greece

KAPSALAKI E., Assistant Professor, Department of Radiology, Faculty of Medicine, University of Thessalia, Larissa, Greece

KARACHALIOS Th., Associate Professor, Orthopaedic Department, Faculty of Medicine, University of Thessalia, Larissa, Greece

KARANTANAS A., Associate Professor, Department of Radiology, School of Medicine, University of Crete, Crete, Greece

KATONIS P., Associate Professor, Orthopaedic Department, Medical School, University of Crete, Heraklion, Crete, Greece

KLETSAS D., Senior Researcher, Laboratory for Cell Proliferation and Aging, Institute of Biology, Demokritos National Center for Scientific Research, Athens, Greece

KOUKOULIS G., Professor & Chairman, Department of Histopathology, Faculty of Medicine, University of Thessalia, Larissa, Greece

LIADAKI K., Lecturer, Department of Biochemistry & Biotechnology, University of Thessalia, Larissa, Greece

LYRITIS G., Professor, Department of Orthopaedics, University of Athens, Athens, Greece

MALIZOS K., Professor & Chairman, Orthopaedic Department, Head of Faculty of Medicine, University of Thessalia, Larissa, Greece

MAMOURIS Z., Professor, Department of Biochemistry & Biotechnology, University of Thessalia, Larissa, Greece

MANTALARIS A., Department of Chemical Engineering, Imperial College London, South Kensington Campus, London, United Kingdom

MEGAS P., Associate Professor, Orthopaedic Department, University of Patras, Patra, Greece

MEULENBELT I., PhD, Molecular Epidemiology, Leiden University Medical Centre, Leiden, Netherlands

MISIRLIS Y., Professor and Director Laboratory of Biomechanics and Biomedical Engineering, Mechanical Engineering & Aeronautics Dept., University of Patras, Patra, Greece

FACULTY

MOUTSOPOULOS H., Professor and Chairman, Faculty of Pathophysiology, Medical School, National and Kapodistrian University of Athens, Athens, Greece

NIKOLAOU P., Orthopaedic Surgeon, Department of Sports Medicine, Medical Centre, Athens, Greece

PAPADAKIS M., PhD, Center for Thalassemia, Unit of Prenatal Diagnosis, LAIKO General Hospital, Athens, Greece

PAPAIOANNOU N., Associate Professor, Director of the Laboratory for Research of the Musculoskeletal System, "Th.Garofalidis," University of Athens, Athens, Greece

SCHNETTLER R., Professor Dr. Dr., Department of Trauma Surgery, University Hospital Giessen-Marburg GmbH, Site Giessen, Germany

SCHREYER T., Dr. med, Hospital Elisabethenstift, Director of Clinic of Trauma-, Sport - and Orthopaedic Surgery, Darmstadt, Germany

SIODLA V., Engineer, Member of the Executive Board of Co.don, Head of Production, Germany

TRATTNIG S., Professor, MR Centre of Excellence, Department of Radiology, Medical University Vienna, Vienna, Austria

TSEZOU A., Associate Professor, Department of Molecular Biology and Genetics, Faculty of Medicine, University of Thessalia, Larissa, Greece

TZETI M., Lecturer of Genetics, Faculty of Medical Genetics, University of Athens, Athens, Greece

TZIOUFAS A.G., Associate Professor, Department of Pathophysiology, School of Medicine, University of Athens, Athens, Greece

VARITIMIDIS S., Assistant Professor, Orthopaedic Department, Faculty of Medicine, University of Thessalia, Larissa, Greece

VLACHOYIANNOPOULOS P.G., Assistant Professor, Department of Pathophysiology, Medical School, I University of Athens, Athens, Greece

VLICHOU M., Assistant Professor, Department of Radiology, Faculty of Medicine, University of Thessalia, Larissa, Greece

ZERVAKIS M., Professor, Department of Electronic and Computer Engineering, Technical University of Crete, Chania, Greece

ZOUROS E., Professor, Department of Biology, University of Crete, Iraklion, Crete, Greece

The **New Generation**
in Osteochondral Transplantation

COARTM

Cartilage Transplant System

**PRECISION
TARGETING
WITH A
GENTLE TOUCH**

**An Arthroscopic Technique
for Repair of Osteochondral Defects**

F. Alan Barber, MD, FACS



DePuy Mitek

a Johnson & Johnson company



The **3D** revolution of ACT

co.don chondrosphere[®]

three-dimensional autologous chondrocyte transplant

