

# European Technology Platform for Nanomedicine

Nanotechnologies for Breakthroughs in Healthcare

## Contact

### Chairman

Bertrand Loubaton – Director, GE Healthcare Europe,  
France

### Vice-Chairman

Dr. Jürgen Simon – Director, Siemens Healthcare,  
Germany

### Secretariat ETP Nanomedicine

Dr. Sebastian Lange  
c/o VDI/VDE Innovation + Technik GmbH  
Steinplatz 1, 10623 Berlin, Germany

Fon: +49 30 310078 155

Fax: +49 30 310078 225

Email: [secretariat@etp-nanomedicine.eu](mailto:secretariat@etp-nanomedicine.eu)

[www.etp-nanomedicine.eu](http://www.etp-nanomedicine.eu)

## Key Stakeholders



[www.etp-nanomedicine.eu](http://www.etp-nanomedicine.eu)



## About the ETP Nanomedicine

The ETP Nanomedicine, an initiative led by industry and set up together with the European Commission, is addressing the application of nanotechnology to achieve breakthroughs in healthcare. Nanotechnology pushes the boundaries of conventional therapeutics, diagnostics and provides for the development of regenerative medicine. The ETP believes that by involving industry it can accelerate the path to the market and provide the effective and safe radical healthcare products that patients expect. The ETP supports its members in coordinating their joint research efforts and improves essential communication amongst the members, as well as towards the European Commission and the European Member States.

## Priorities

The research priorities of the ETP Nanomedicine represent the core fields of interest of the members of the technology platform and are:

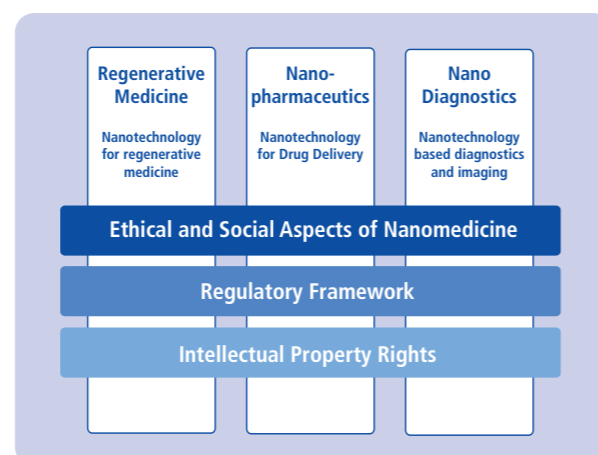
- Regenerative Medicine,
- Nanopharmaceuticals,
- Nanodiagnosics.

The ETP, bridging the gap between research and product development, is focused on industrialisation of nanomedicines to bring real benefits to patients in the shortest possible time. It is important that researchers understand the complex environment that surrounds the healthcare sector before initiating research. Such knowledge transfer should lead to innovative science, new industries and better healthcare.

## Objectives

The ETP Nanomedicine is a major, transnational, pan-European, mission-oriented initiative aiming at strengthening Europe's capacity to organise and to deliver innovation in the area of nanomedicine. The ETP embraces all key players, public and private, in the value chain so as to:

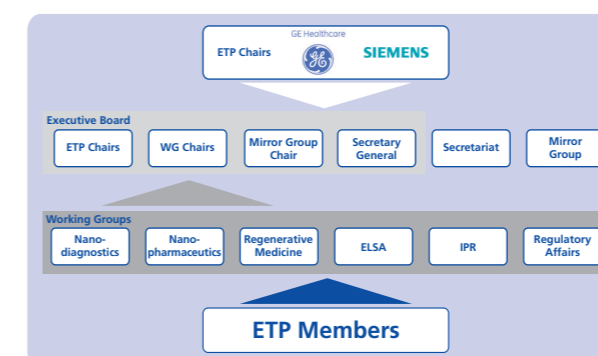
- Provide a common European approach on nanomedicine,
- Establish a clear strategic vision in the area and provide a continuously updated strategic R&D agenda and Identify priority areas,
- Promote translation of research from academia to industry and clinics,
- Foster open innovation concepts,
- Decrease fragmentation in nanomedical research,
- Mobilise public and private investment,
- Boost innovation in nanobiotechnologies for medical use,
- Strengthen global competitiveness of the European industry, SMEs & research institutions.



## The ETP Nanomedicine Network

The ETP Nanomedicine Networks consists of:

- Industry representatives, including SMEs,
- Public and private research organisations,
- Clinical institutions, clinical institutes and hospitals, healthcare providers,
- Representatives of the European Commission from EU member states and regulatory bodies.



## Organisational Structure

The Executive Board of the ETP Nanomedicine consists of the Working Group chairs, the ETP and Mirror Group chairs and the Secretary General. The Working Groups – structured according to the ETP Priority areas – are chaired by representatives from industry. The ETP members are composed of representatives from industry, private & public research organisations, universities, clinical institutes and hospitals, public authorities and scientific, industrial and public associations.

The work of the platform is supported by the Secretariat of the ETP.

## ETP Nanomedicine services offer a series of advantages

Being a member of the ETP Nanomedicine should improve your understanding of industrial and EU priorities. It is an efficient forum for networking and getting advice. Membership allows you to:

- Access the internal area of the web portal and fully participate in the information flow
- Have unlimited access to the working groups and to participate in informed debates on developments and on Commission decisions
- Receive the electronic newsletter
- Participate in closed meetings such as the annual general assembly or expert workshops organised by the ETP Nanomedicine
- Get latest information on EU policies and calls for proposals

## How to join the ETP Nanomedicine

After being accepted as a member you will contribute to the financing of the ETP-Nanomedicine secretariat. The yearly ETP membership fee is (+VAT):

- Industry > 5000 employees - 20.000 €
- Industry > 250 employees - 10.000 €
- SMEs 15 – 250 employees - 1.500 €
- SMEs < 15 employees - 1.000 €
- Healthcare providers - 1.000 €
- Academia, research centres & associations - 500 €

To join the ETP Nanomedicine please complete the application form at:

[www.etp-nanomedicine.eu/public/about/membership](http://www.etp-nanomedicine.eu/public/about/membership)