

3rd Annual International Symposium

# FUEL CELLS

## DURABILITY & PERFORMANCE

2  
0  
0  
7

Real World Solutions to the Most Significant Challenges Facing Fuel Cells Commercialization

*November 14-16, 2007 • Miami, FL USA*

- **Automotive**
- **Stationary**
- **Portable**



PRESENTED BY:  
**KNOWLEDGE FOUNDATION**  
TECHNOLOGY COMMERCIALIZATION ALLIANCE

# FUEL CELLS DURABILITY & PERFORMANCE

Real World Solutions to the Most Significant Challenges Facing Fuel Cells Commercialization

November 14-16, 2007 • Miami, FL USA

## PROGRAM SCOPE AND CALL FOR PRESENTERS

The 3rd annual meeting in The Knowledge Foundation's **Fuel Cells Durability & Performance** series will provide an interdisciplinary discussion forum for fuel cell developers, manufacturers and suppliers working in the fields of fuel cells materials, stacks, system design, fabrication, and testing. The objectives of this meeting are: to discuss the latest innovations and emerging durability and performance issues common for all fuel cell systems, and specific to different types, designs, and sizes of fuel cells; to bring the attention of the testing systems, standards, and regulations development community to the current hurdles preventing fuel cells systems from large scale commercialization.

### PROPOSED SCOPE AND MEETING STRUCTURE

This technical program will examine the following issues currently facing the fuel cells R&D community and the industry (to name a few):

#### Factors affecting fuel cells durability and performance across system types and sizes

- Components, stacks, and system integration. Balance of plant
- "Start-stop" cycling and related issues
- Impact of freeze on the performance and durability of fuel cell components and systems
- New materials for MEA and GDL to enhance freeze tolerance and subfreezing operation
- Water management approaches

#### MEAs, electrodes, and GDL degradation, durability, and performance

- Membrane degradation mechanisms
- Advanced MEAs for operation at elevated temperatures and its low cost fabrication
- Effect of operation conditions on membrane durability and stack performance

#### Polymer electrolytes and electrocatalysts: Issues and solutions

- Fuel cells durability effects at the polymer electrolyte - electrode interface
- Novel low-Pt and Pt-free electrocatalysts using materials-by-design approach
- Consumption of Pt catalyst under electrolysis and fuel cell operation

#### From materials, components, system integration and testing to cost reduction

- Fuel cell stack and system membrane degradation and reliability
- Fuel cell life cycle - cost analysis
- Materials and manufacturing costs: bipolar plates, catalysts, MEAs and GDLs

The two-and-a-half-day meeting program will feature:

4 half-day Technical Sessions of the Main Conference Program

- Half-day Pre-Conference Workshop
- Exhibits and workshops in exhibit area
- Panel and round table discussions
- Networking opportunities

Should you have any suggestions regarding (1) proposed scope, and/or (2) potential speakers you'd like to have invited and hear from do not hesitate to let us know (include contact info for the person you want to be invited to give a talk - E-mail/Tel). You may contribute into designing the program the way you'd like it to be.

### CALL FOR PRESENTERS

For potential speakers interested in presenting their latest achievements in this emerging field of R&D, opportunities to speak at the **Fuel Cells Durability & Performance 2007** meeting remain. If you or a colleague are interested in participating as a speaker, we would like to encourage industry, government and academic experts to look into the proposed scope of the meeting and submit a talk proposal for the Program Committee's consideration (please see below simple guidelines for mini-abstract submission).

#### Submission Guidelines

In order to put together the Agenda and publish the conference brochure we need to receive via E-mail:

- Title of your presentation
- Brief description (mini-abstract) - 60-70 words only
- Speaker's title, affiliation and contact info

Deadline for all E-mail submissions is May 5, 2007

E-mail your materials to:

Fuel Cells Durability & Performance 2007  
c/o Knowledge Foundation  
(617) 232-7400 ext. 211  
span@KnowledgeFoundation.com

# FUEL CELLS DURABILITY & PERFORMANCE

Real World Solutions to the Most Significant Challenges Facing Fuel Cells Commercialization

November 14-16, 2007 • Miami, FL USA

## CALL FOR SPONSORS AND EXHIBITORS

### SPONSORSHIP AND EXHIBITING OPPORTUNITIES

Participating as an exhibitor or sponsor is the most cost effective way to gain high quality, extremely focused exposure to the leaders of the industry. Among other benefits, sponsorship packages include your logo on premarketing materials to promote your organization's participation and expose your company to 10's of thousands of prospects prior to the program – in addition to the highly targeted audience we deliver at the event itself.

### NETWORKING EVENT SPONSORSHIPS

These "mini" sponsorships offer representatives of your organization a dedicated opportunity to network with conference delegates – with your organization clearly recognized as the host of the event.

- Cocktail Receptions
- Luncheons
- Dinner Banquets
- Hospitality Suites

### WORKSHOP SPONSORSHIPS

Your company may sponsor a workshop (subject to approval) for delegates in conjunction with the conference. Highlight your organization's expertise! Delegate feedback indicates that these scientific/technical vehicles enhance retention of your organization's presence in their minds – increasing the potential for drawing customers long after the conference is over.

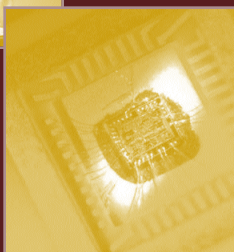
Call Craig Wohlers at (617) 232-7400 ext. 205 or email [cwohlers@knowledgefoundation.com](mailto:cwohlers@knowledgefoundation.com) today to for pricing information and customization options.



3rd International Conference  
**LITHIUM  
MOBILE  
POWER** <sup>SM</sup>  
**2007**

**Register  
Today!**

**October 29-30, 2007  
San Diego, CA USA**



Become a member of the Alliance today and save 15-20% off your conference registration to Fuel Cells Durability & Performance

For complete membership information go to:  
[www.knowledgefoundation.com](http://www.knowledgefoundation.com)

# 3rd Annual International Symposium FUEL CELLS

## DURABILITY & PERFORMANCE 2007

Real World Solutions to the Most Significant Challenges Facing Fuel Cells Commercialization

November 14-16, 2007 • Miami, FL USA

### REGISTRATION FORM

2998 WEBPRELIM 1 2 3 4 5

Please register me for	Corporate Member	Individual Member	Non-Member
<input type="checkbox"/> FCD 2007 Main Conf. & Wksp. (Commercial)	<input type="checkbox"/> \$1279	<input type="checkbox"/> \$1359	<input type="checkbox"/> \$1599
<input type="checkbox"/> FCD 2007 Main Conf. & Wksp. (Acad./Gov.)*	N/A	<input type="checkbox"/> \$934*	<input type="checkbox"/> \$1099*
<input type="checkbox"/> FCD 2007 Main Conference Only (Commercial)	<input type="checkbox"/> \$959	<input type="checkbox"/> \$1019	<input type="checkbox"/> \$1199
<input type="checkbox"/> FCD 2007 Main Conference Only (Acad./Gov.)*	N/A	<input type="checkbox"/> \$679*	<input type="checkbox"/> \$799*
<input type="checkbox"/> Poster Space Reservation	<input type="checkbox"/> \$65	<input type="checkbox"/> \$65	<input type="checkbox"/> \$65

I would like to become a member of the Knowledge Foundation Technology Commercialization Alliance:

Individual Member (save 15% off this reg. fee) annual dues: \$99-\$249/year dependent on current affiliation

Corporate Member (save 20% off this reg. fee) annual dues: \$999-\$2499/year dependent on company size

I cannot attend, but please send the conference documentation.

Enclosed is my check for \$299.  Invoice Me

Enclosed is a check/bank draft for US\$ \_\_\_\_\_

**Become a member of the alliance & take 15-20% off your registration fee**

Invoice me  Charge my Credit Card:  VISA  MC  AMEX in the amount of US\$ \_\_\_\_\_

Card #: \_\_\_\_\_ Exp.: \_\_\_\_\_

Please send me information on exhibit and sponsorship opportunities.

Name: \_\_\_\_\_

Job Title: \_\_\_\_\_

Organization: \_\_\_\_\_

Division: \_\_\_\_\_

Address: \_\_\_\_\_

City/State/Zip: \_\_\_\_\_

Tel: \_\_\_\_\_ Fax: \_\_\_\_\_

Email: \_\_\_\_\_

\*The academic/government rate is extended to all participants registering as full time employees of government and universities. To receive the academic/government rate you must not be affiliated with any private organizations either as consultants or owners or part owners of businesses.

**FAX, MAIL, CALL, E-MAIL TO:**

**The Knowledge Foundation**

**18 Webster Street**

**Brookline, MA 02446 USA**

**Tel: (617) 232-7400**

**Fax: (617) 232-9171**

**E-Mail: [custserv@knowledgefoundation.com](mailto:custserv@knowledgefoundation.com)**

**PAYMENT:** All payments must be made in U.S. funds drawn on a U.S. bank. Please make check(s) payable to The Knowledge Foundation and attach to the registration form even if you have registered by phone, fax or e-mail. To guarantee your registration, payment must be received prior to the conference. Confirmation of your booking will follow.

**DISCOUNT ACCOMMODATIONS AND TRAVEL:** A block of rooms has been allocated at a special reduced rate. Please make your reservations by **October 10, 2007**. When making reservations, please refer to the The Knowledge Foundation. Contact The Knowledge Foundation if you require assistance.

**Venue: Radisson Hotel Miami**  
1601 Biscayne Blvd  
Miami, FL 33132

**For Hotel Reservations Contact:**

**ANDERSEN TRAVEL**

**Phone: (508) 429-6494 or 1-800-229-6494**

**Fax: (508) 429-7380**

**Email: [kramer@andersentvl.com](mailto:kramer@andersentvl.com)**

The Knowledge Foundation's official travel agent, Andersen Travel will assist you in making all or a portion of your travel arrangements.

**SUBSTITUTIONS/CANCELLATIONS:** A substitute member of your company may replace your attendance at any time at no charge if you find your schedule prevents you from attending. Please notify us immediately so that materials can be prepared. If you do not wish to substitute your registration, we regret that your cancellation will be subject to a \$100 processing fee. To receive a prompt refund, we must receive your cancellation in writing 30 days prior to the conference. Unfortunately cancellations cannot be accepted after that date. In the event that The Knowledge Foundation cancels an event, The Knowledge Foundation cannot resume responsibility for any travel-related costs.

#### UNABLE TO ATTEND?

You can purchase a full set of conference documentation. Simply check the box on the registration form and send it to us along with your payment. Please allow 4 weeks after the conference date for delivery.